

Paving the (Long) Road to MODERN WEB SECURITY

As technology changes at incredible speed, IT must keep up with the latest devices and applications while also maintaining the highest levels of security for new – and old – systems.



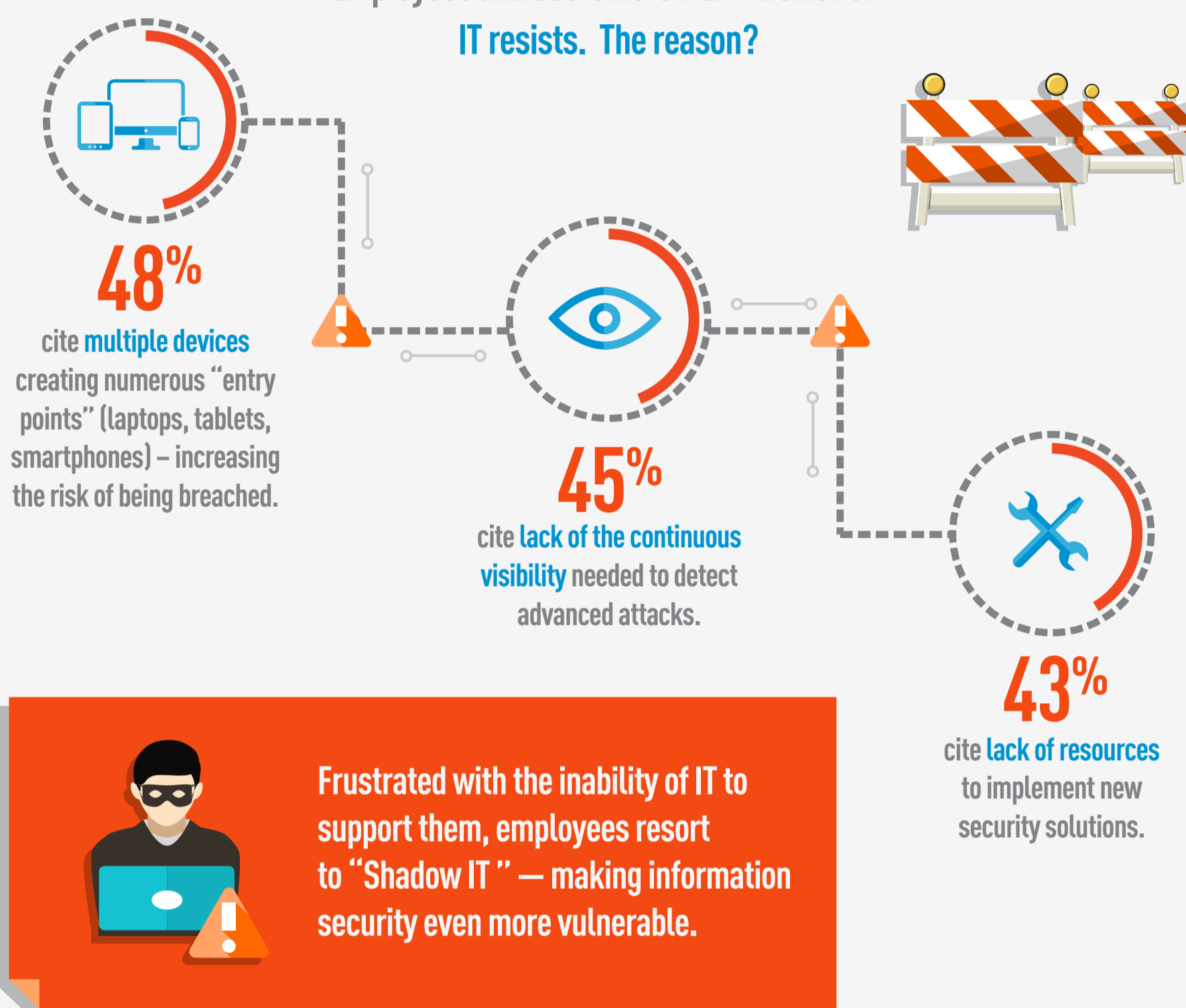
The Mission:

IT must protect the enterprise and its critical data; keep devices, systems and infrastructure up to date and secure.

Roadblocks Along the Route

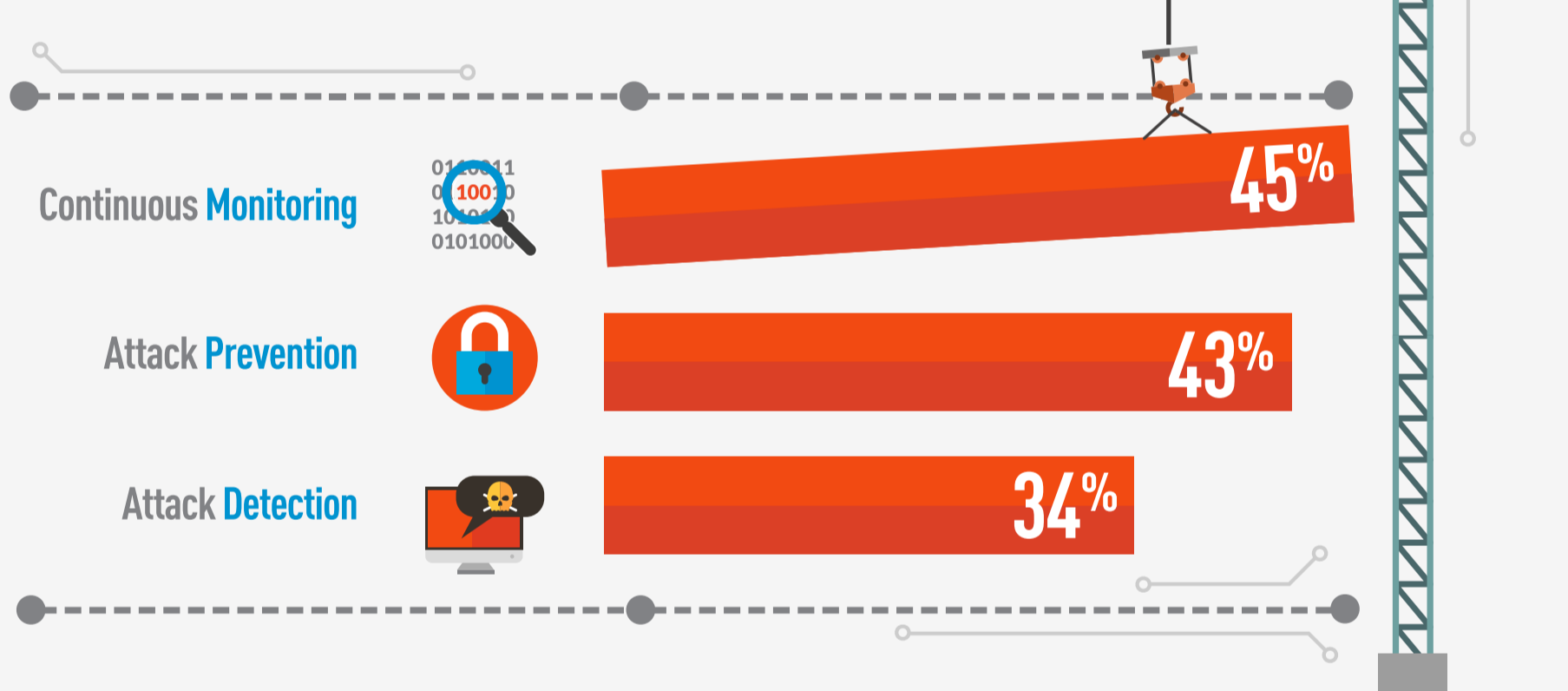
New devices, applications, and cloud services become available every day. Employees and customers want them. *Now.*

IT resists. The reason?

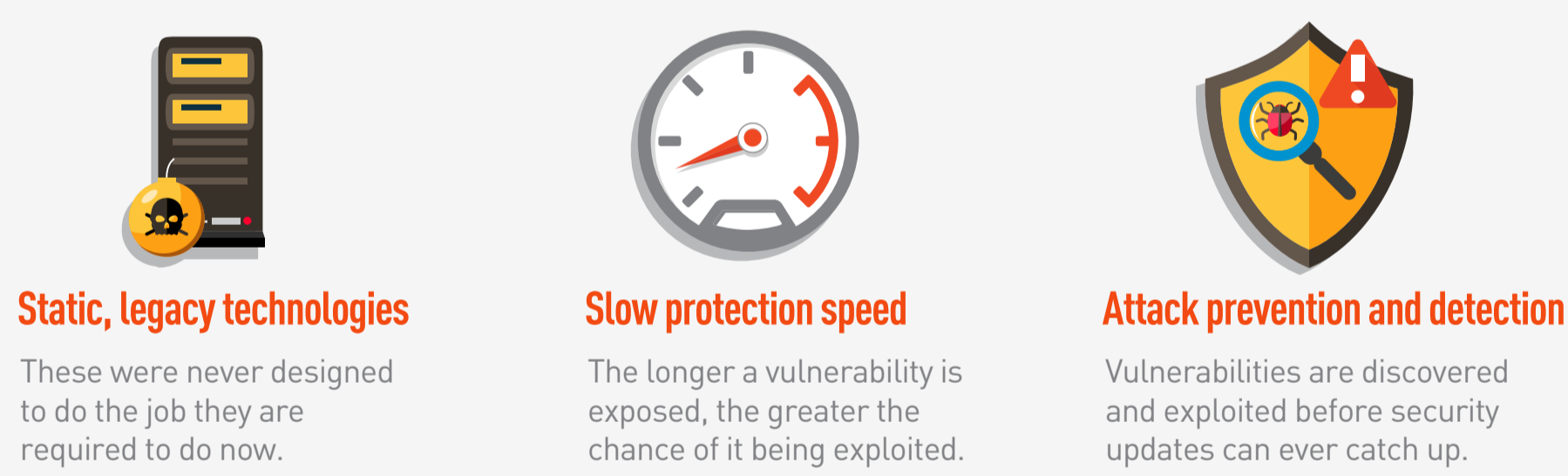


Road Construction Strategy

What IT is Doing Now



What's Not Working



What Can Be Done



Source: 2015 IDG Research Survey of IT professionals.